

NOTE ALL FLOOR REGISTERS ARE 4x10 UNLESS OTHERWISE NOTED

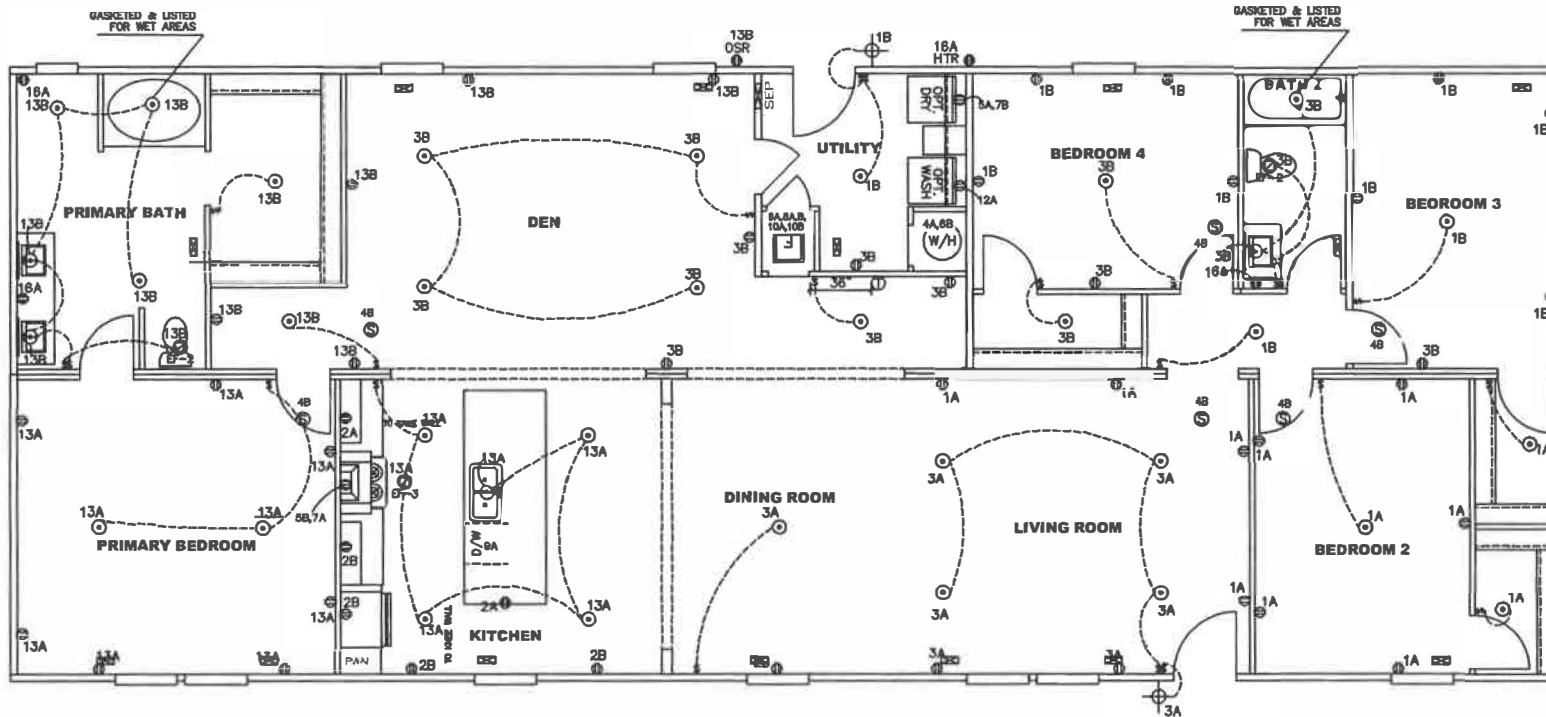
REV:3/1/2021 3:39 PM

SQ. FT. (STD PLAN "CONDITIONED")
 2,280 SQ. FT. (W/OPT. PORCH/RECESS "CONDITIONED")

FLOOR PLAN	

CIRCUIT	CIRCUIT #	WIRE	BREAKER	CIRCUIT	CIRCUIT #	WIRE	BREAKER	CIRCUIT	CIRCUIT #	WIRE	BREAKER
LIGHT/RECEP	1A,B,3A,B,13A,B	14-2	15-SP	WATER HEATER	4A,6B	SEE NOTE #8		BATHROOM	16A	12-2	20-SP
KITCHEN/DISHW	2A,2B	12-2	20-SP	RANGE	5B,7A	SEE NOTE #8		OPT O/DHSP	9B	SEE NOTE #8	
WASHER	12A	12-2	20-SP	FURNACE	8A,8A,B,10A,B	SEE NOTE #8		OPT W/H	11A,B	SEE NOTE #8	
DRYER	5A,7B	SEE NOTE #8		OPT D/WASH	9A	SEE NOTE #8		FREEZER	N/A	SEE NOTE #8	
				SMOKE ALARM	4B	SEE NOTE #8					

SYMB	DESCRIPTION	SYMB	DESCRIPTION
Ⓜ	115v RECEPTACLE OUTLET	Ⓢ	DISHWASHER
Ⓜ	220v RECEPTACLE OUTLET	Ⓢ	GARBAGE DISPOSAL
Ⓜ	GFI RECEPTACLE OUTLET	Ⓢ	JACUZZI
Ⓜ	THERMOSTAT	Ⓢ	WHIRLPOOL
Ⓜ	SMOKE DETECTOR	Ⓢ	SPA
Ⓜ	SWITCH	Ⓢ	GROUND FAULT INTERUPTOR
Ⓜ	EXHAUST FAN	OSR	OUTSIDE RECEPTACLE
Ⓜ	FLOOD LIGHT FIXTURE	HTR	HEAT TAPE RECEPTACLE
Ⓜ	FIRE EXTINGUISHER	P.C.	PULL CHAIN FIXTURE
Ⓜ	LIGHT FIXTURE	Ⓢ	CEILING FAN
Ⓜ	CAN LIGHT	Ⓢ	LIGHT/FAN COMBO
Ⓜ	STRIP LIGHT	Ⓢ	PENDANT LIGHT FIXTURE
Ⓜ	FLORESCENT LIGHT	SEP	SERVICE PANEL



NOTES:

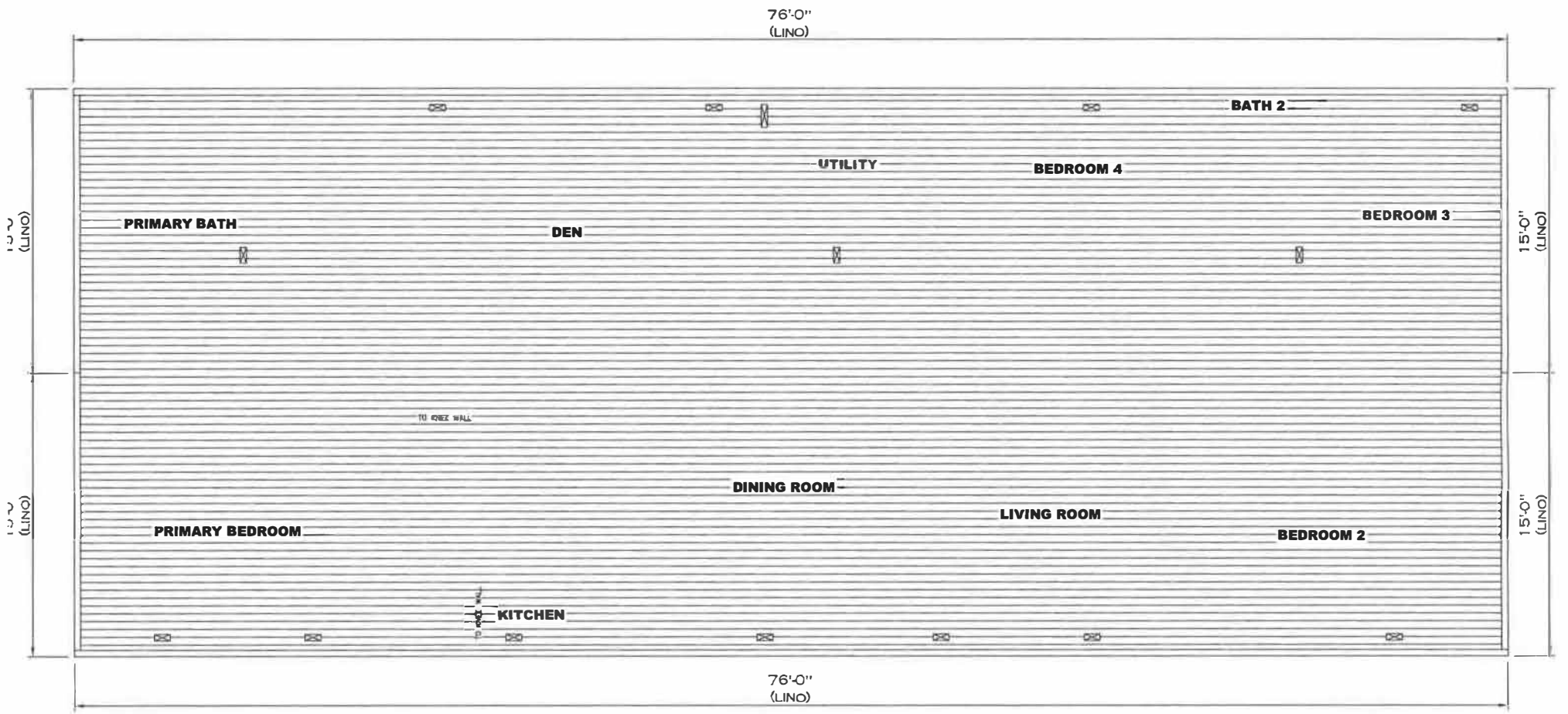
1. REFER TO EL SECTION OF THE DAPIA FOR SYMBOL CHART.
2. EITHER LIGHT OR RECEPTACLE MUST CONNECT TO SWITCH.
3. EF-1= 50 CFM EXHAUST FAN REQUIRED FOR THERMAL ZONE III THERMAL ZONES I & II MAY USE FAN OR WINDOW W/1.5 SQ. FT. OPENABLE GLASS.
4. EF-2= 50 CFM EXHAUST FAN REQUIRED THERMAL ZONE I, II, AND III.
5. EF-3= 100 CFM RANGE EXHAUST FAN, SWITCH AT HOOD.
6. ALL SMOKE ALARMS TO BE LOCATED ON THE CEILING.
7. DIMENSIONS SHOWN ON PRINT ARE APPROXIMATE AND TO BE USED ONLY AS A GUIDELINE.
8. REFER TO EL SECTION OF THE DAPIA OR THE MFG. INSTALLATION INSTRUCTIONS FOR PROPER WIRE SIZE AND BREAKER SIZE FOR SPECIFIC APPLIANCE AND MODEL BEING INSTALLED.

SQ.FT. (STD PLAN "CONDITIONED")
2,280 SQ.FT. (W/OPT. PORCH/RECESS "CONDITIONED")

E	Model #: CEA32764A1	Drawing #:
	Date: 12.13.18	Scale: N.T.S.

REV:-3/1/2021 3:38 PM

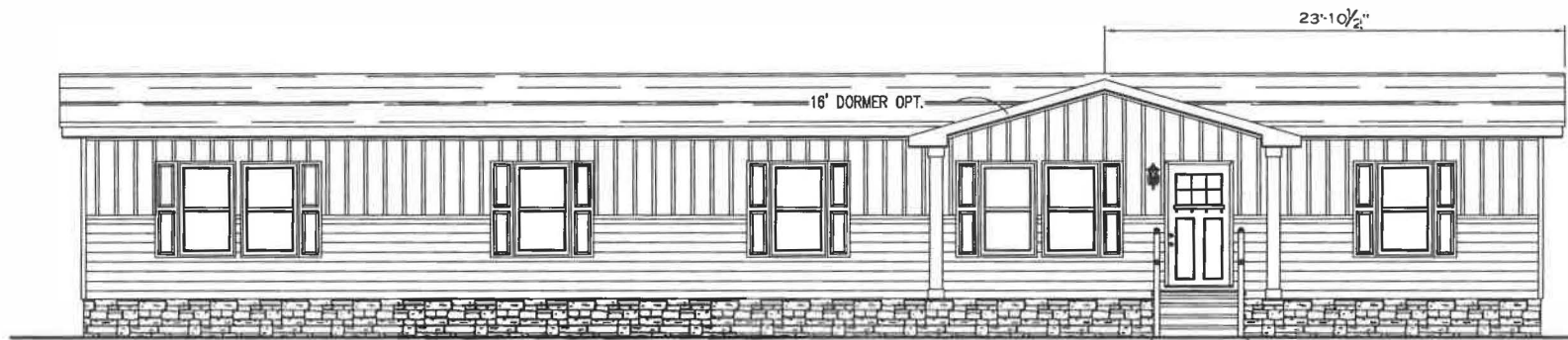
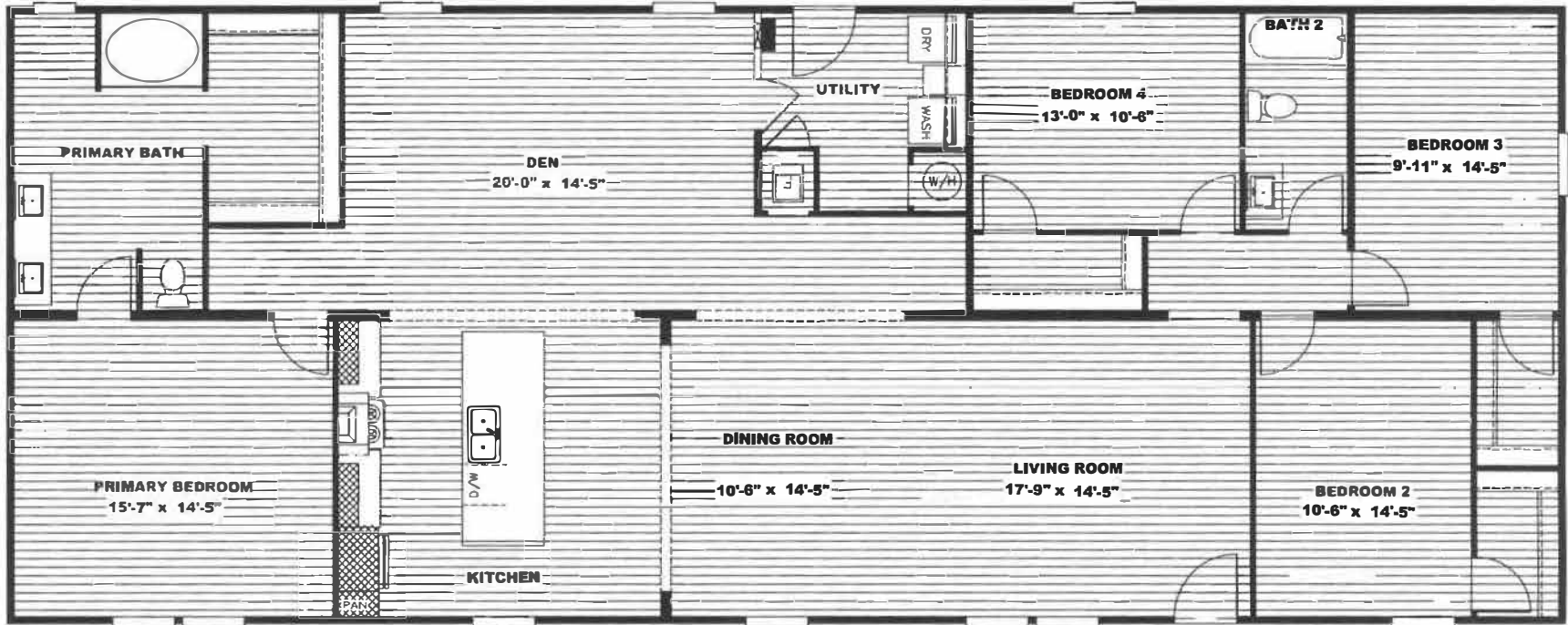
ELECTRICAL PLAN-06



SQ.FT. (STD PLAN *CONDITIONE
 2,280 SQ.FT. (W/OPT. PORCH/RECESS *CONDITIONE

Model # CEA32764AN Drawn by:

REV:3/1/2022 10:48 AM LINO CUTS



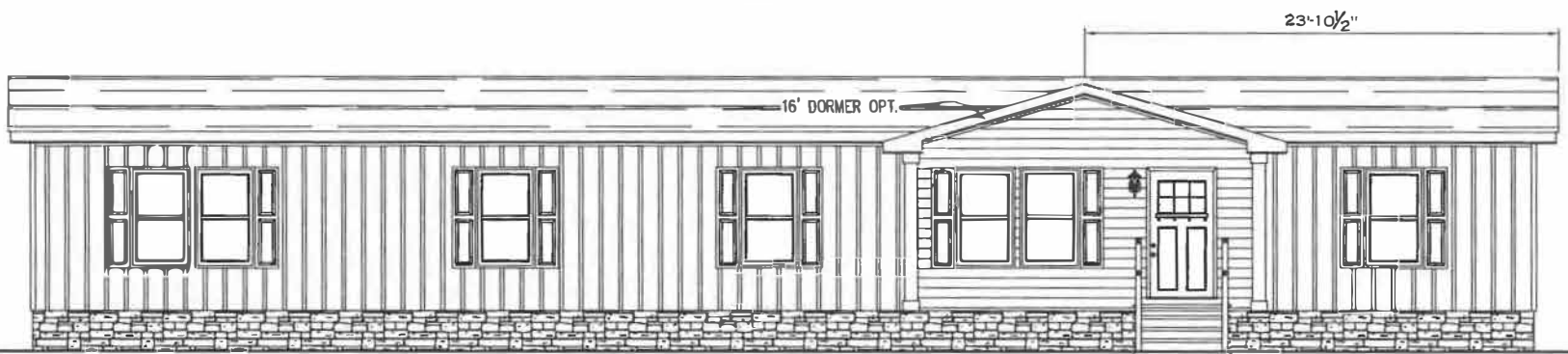
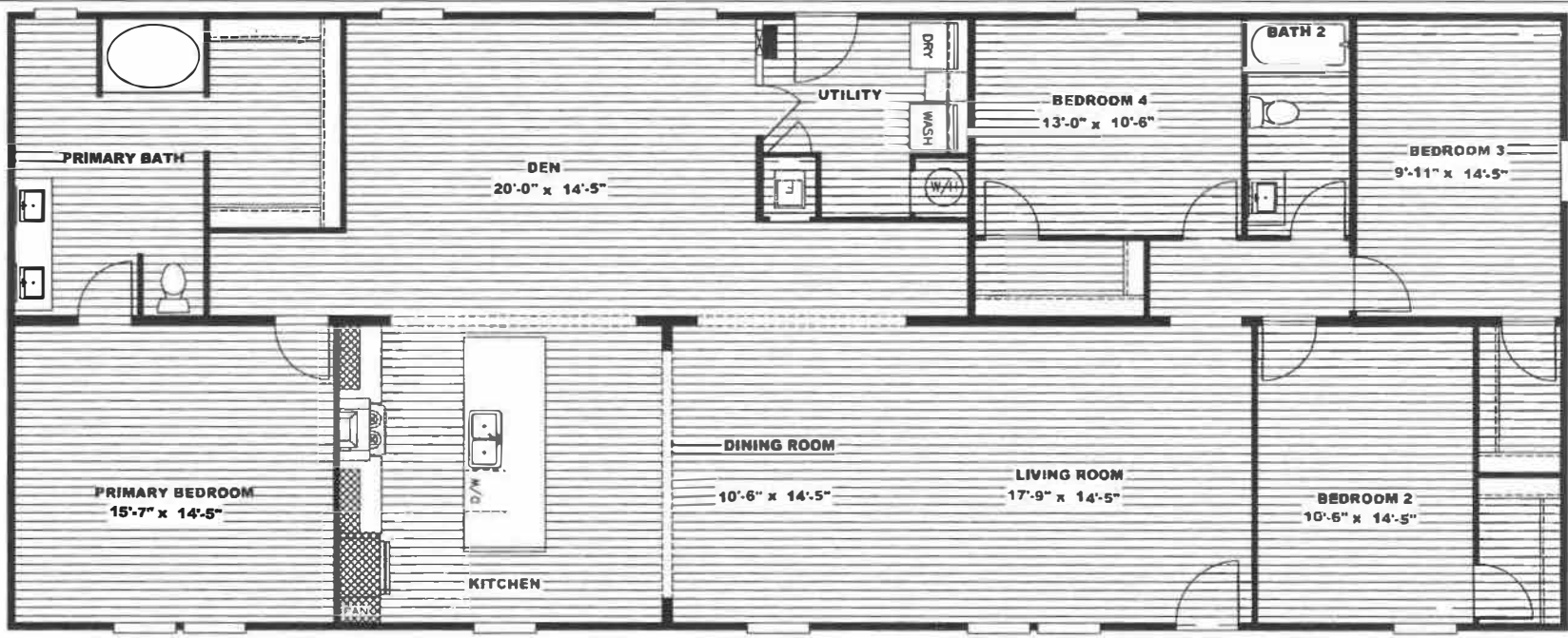
FRONT ELEVATION

SQ.FT. (STD PLAN "CONDITIONED")
 2,280 SQ.FT. (W/OPT. PORCH/RECESS "CONDITIONED")

E	Model #: CEAS2764R1	Drawing #:

REV:3/1/2022 10:46 AM

ELEVATIONS



FRONT ELEVATION

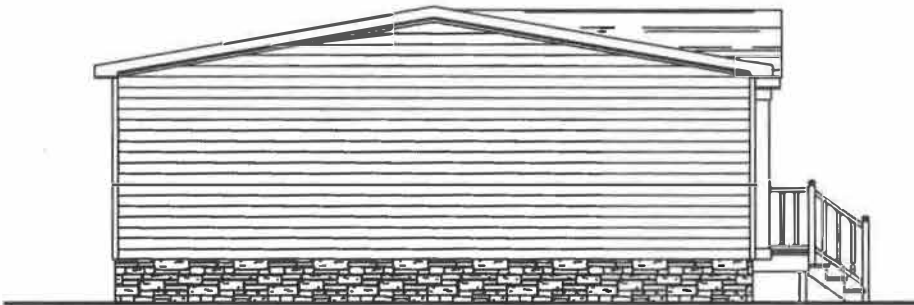
SQ.FT. (STD PLAN "CONDITIONED")	
2,280 SQ.FT. (W/OPT. PORCH/RECESS "CONDITIONED")	
Model #: CEA32764AH	Drawing #:
Date: 2.3.1	Scale: N.T.S.
Product Designer:	32'x76'

REV:3/1/2022 10:46 AM

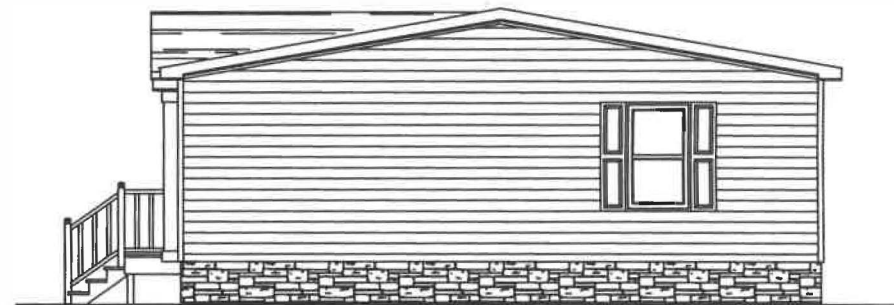
ELEVATIONS



REAR ELEVATION



LEFT SIDE ELEVATION



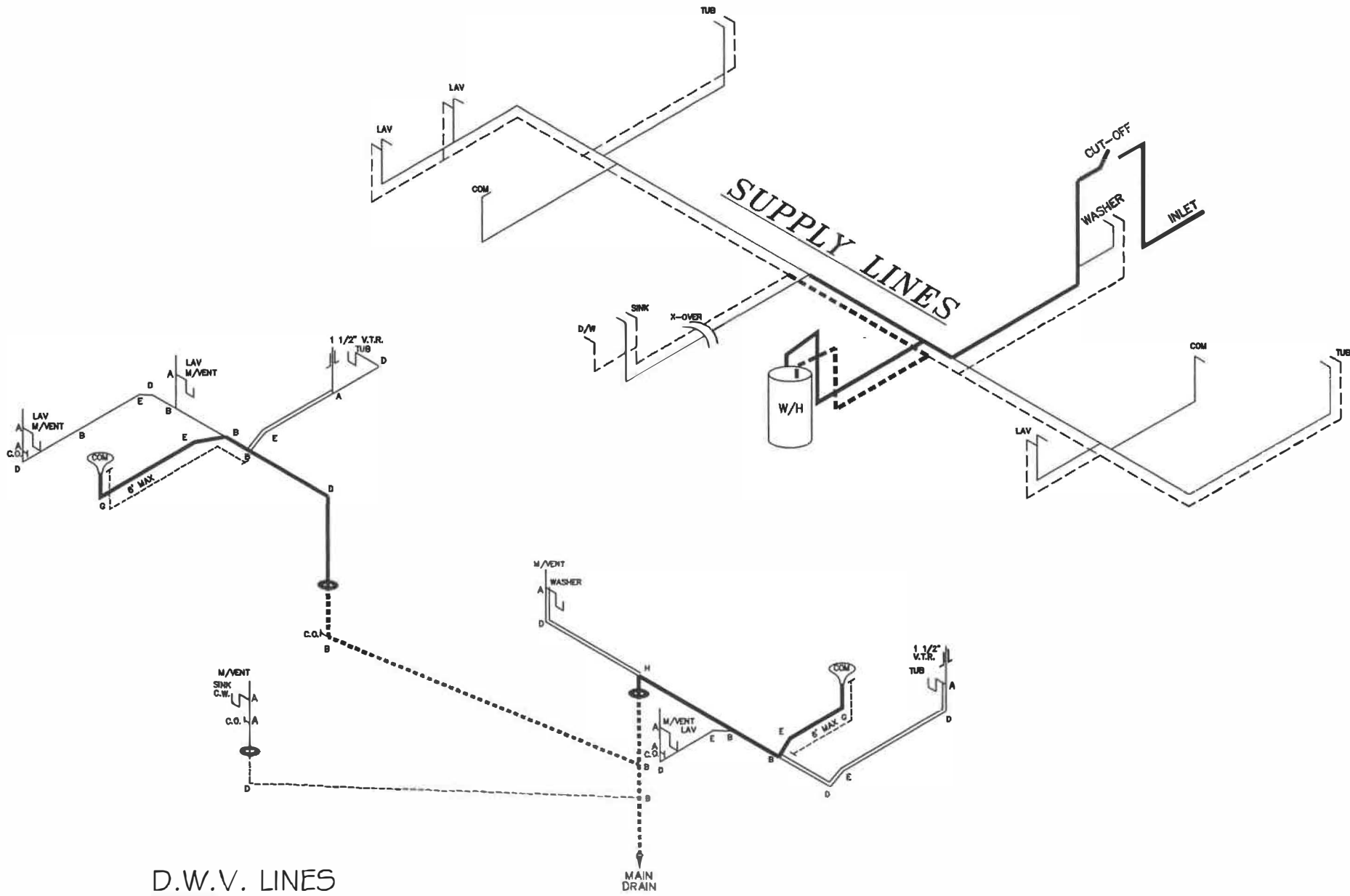
RIGHT SIDE ELEVATION

SQ.FT. (STD PLAN "CONDITIONED")
 2,280 SQ.FT. (W/OPT. PORCH/RECESS "CONDITIONED")

E	Model #: CEAS2764AM	Drawing #:
	Date: 12.13.19	Scale: N.T.S.

REV:3/1/2021 3:41 PM

ELEVATIONS



D.W.V. LINES

LEGEND	
A	SHORT TURN T-Y
B	LONG TURN T-Y
C	1/4 BEND
D	LONG SWEEP 1/4 BEND
E	45° ELL
F	DBL. SANITARY TEE
G	4x3 CLOSET ELL
H	DOUBLE ELL
I	22 1/2° ELL
J	45° Y
K	LONG TURN STREET ELBOW

DWV LINE SIZE CHART	
	= 3"
	= 2"
	= 1 1/2"

NOTE:
 DASHED LINES INDICATES HOT WATER
 SOLID LINES INDICATES COLD WATER

= 3/4"
 = 1/2"

REV:3/1/2021 3:40 PM

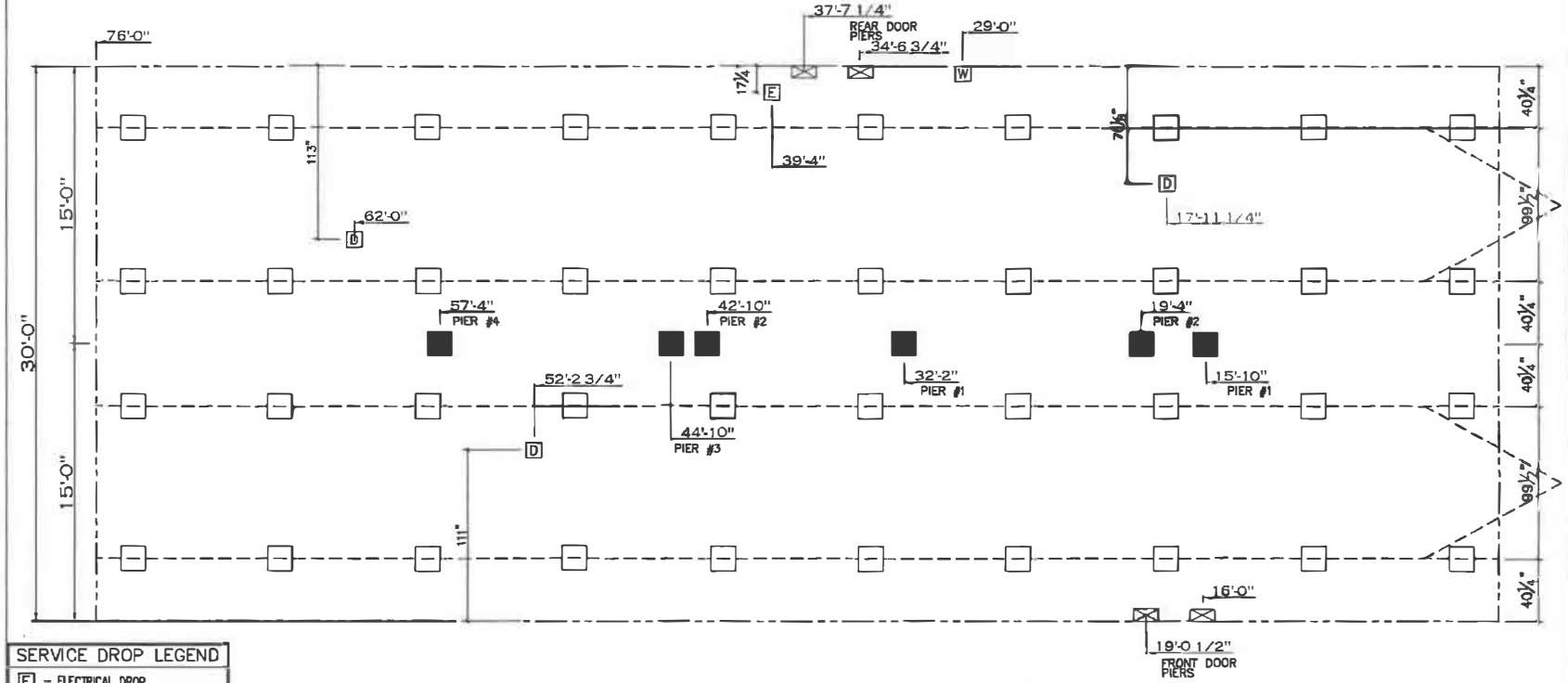
SQ.FT. (STD PLAN "CONDITIONED")
 2,280 SQ.FT. (W/OPT. PORCH/RECESS "CONDITIONED")

E	Model #: CEAS2764AM	Drawing #:
	3	

D.W.V. and Supply Lines

20 lb ROOF LOAD SIDEWALL OPENING PIER LOAD 32' BOX WIDTH	SIDEWALL OPENING (FT)					
	REQUIRED PIER LOAD (LBS)					
	3	4	5	6	8	10
	1244	1413	1581	1750	2088	2425

FOR 30 lb & 40 lb ROOF LOAD REFER TO TABLES 7b & 7c IN THE INSTALLATION MANUAL.



SERVICE DROP LEGEND

- E = ELECTRICAL DROP
- W = WATER INLET
- D = DWV PLUMBING DROP
- G = GAS INLET

PIER LEGEND

- = SUPPORT UNDER MATING OPENING
- = SUPPORT AT MATING COLUMN
- ⊞ = SUPPORT UNDER MATING WALL
- = PIER PORCH/RECESSED ENTRY
- = PIER MAIN BEAM
- ⊞ = PIER PERIMETER
- = TIE-DOWN SUPPORT (QTY PER TBL 14, SEE DETAIL D-8 IN FOUND. PKG.)

- GENERAL NOTES:**
- PIER LOADS SHOWN ARE TO BE USED TO SIZE THE FOOTINGS BELOW THE MARRIAGEWALL FOR COLUMN SUPPORT PIERS. REFER TO TABLES 6b AND 6c IN THE INSTALLATION MANUAL FOR LOAD ON FRAME PIER FOOTINGS FOR HOMES THAT DO NOT REQUIRE PERIMETER BLOCKING. REFER TO TABLES 7b AND 7c IN THE INSTALLATION MANUAL FOR LOAD ON FRAME PIER FOOTINGS THAT REQUIRE PERIMETER BLOCKING. REFER TO TABLES 10 AND 10a TO DETERMINE FOOTING SIZE FOR ALL PIERS.
 - REFER TO TABLE 9 FOR PIER CONFIGURATION AND MAXIMUM ALLOWABLE HEIGHTS. CROSS REFERENCE THE PIER HEIGHT WITH THE MAXIMUM ALLOWABLE FLOOR HEIGHT LISTED IN THE FRAME TIEDOWN CHARTS (TABLE 18, 19, AND 20).
 - FLOOR WIDTH SHOWN IS FOR STANDARD PRODUCT ONLY. CONTACT THE MFG PLANT FOR SPECIFICATIONS OF OPTIONS ORDERED.
 - SERVICE DROP LOCATIONS IDENTIFIED ARE APPROXIMATE.
 - THE MAXIMUM SPACING FOR FRAME SUPPORT PIERS FOR 8" I-BEAMS IS 8 FEET, 10" & 12" I-BEAMS ARE 10 FEET.

20 psf Roof Live Load

Column Pier #	Distance from Hitch	Pier Load (lbs)
1	15.833	1206
2	19.417	1206
3	32.167	2687
4	42.333	2687
5	45.333	3100
6	57.333	3100

SQ.FT. (STD PLAN "CONDITIONED")
2,280 SQ.FT. (W/OPT. PORCH/RECESS "CONDITIONED")

Model #: CEAS276AA1
Drawing #:

PIER LOADS

REV:3/1/2022 10:41 AM